

6125 UNIVERSAL CLUTCH ALIGNMENT TOOL KIT

All steel tools service most cars and light trucks. Includes center shaft, tapered cone and 8 bushing sizes: 12/12.7mm, 15.8/16mm, 17.4/18mm, 21/22mm, .561/.59", 75/.787", .812/.874" & .984/1.181".



CLUTCH ALIGNMENT TOOLS - CARS & LIGHT TRUCKS

Precision tools for accurate alignment of the clutch disc and pilot bearing. Special grade injection molded plastic tools are exact replicas of the transmission input shafts. Fits most passenger cars, light trucks, vans and sport utility vehicles.

No.	Size (Dia. x Spline)	No.	Size (Dia. x Spline)	No.	Size (Dia. x Spline)	No.	Size (Dia. x Spline)
6200	1" x 24	6228	7/8" x 21	6254	1-1/8" x 26	6287	15/16" x 24
6202	13/16" x 18	6230	3/4" x 23	6256	1-1/4" x 10	6288	1" x 24
6204	1" x 23	6232	7/8" x 21	6258	1-3/8" x 10	6289	1" x 14
6206	1" x 14	6234	7/8" x 20	6262	13/16" x 21	6290	1" x 23
6208	15/16" x 22	6236	7/8" x 20	6264	1" x 24	6291	1-1/4" x 10
6210	13/16" x 24	6238	1" x 24	6268	1" x 23	6292	1-3/16" x 14
6212	1-1/8" x 21	6240	13/16" x 18	6270	7/8" x 10	6293	3/4" x 19
6214	15/16" x 21	6242	1" x 23	6272	1" x 21	6294	1-1/8" x 10
6216	13/16" x 19	6244	1-1/16" x 10	6274	3/4" x 18	6266	9" X 18
6218	7/8" x 20	6246	7/8" x 20	6282	1-3/8" x 10		
6220	13/16" x 18	6248	1-1/16" x 10	6284	1-1/6" x 20		
6222	1" x 24	6250	1-1/8" x 10	6285	1-1/8" x 21		
6224	13/16" x 19	6252	1" x 14	6286	15/16" x 21		

Visit website www.ctatools.com for application details



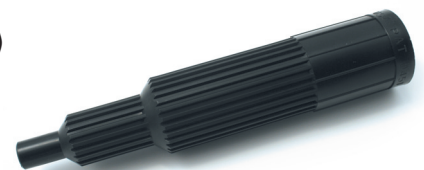
CLUTCH ALIGNMENT TOOLS - TRUCK

No.	Size (Dia. x Spline x Pilot Dia.)	No.	Size (Dia. x Spline x Pilot Dia.)
6300	1-1/2" x 10 x .980"	6312	1-3/4" x 10 x .980" - AEX
6302	1-1/2" x 10 x .750"	6314	1-3/4" x 10 x 1.18" - Long
6304	1-1/2" x 10 x .980" - Short	6315	2" x 10 x 1.18"
6305	1-3/4" x 10 x 1.18"	6317	2" x 10 x 1.18" - Long
6310	1-3/4" x 10 x .980"		



CLUTCH ALIGNMENT TOOLS - AGRICULTURAL

No.	Size (Dia. x Spline / Dia. x Spline)	No.	Size (Dia. x Spline / Dia. x Spline)
6400	15/16" x 10 / 1-3/8" x 19	6410	1-1/8" x 10 / 1-3/4" x 16
6402	1-1/8" x 10 / 1-5/8" x 10	6412	1-1/4" x 10 / 1-3/4" x 27
6404	1" x 10 / 1-7/8" x 29	6414	1-1/8" x 10 / 1-3/4" x 10
6406	1" x 1/16" x 16 / 1-11/16" x 26	6416	1-1/8" x 21 / 1-5/8" x 25
6408	1-1/4" x 19 / 1-7/8" x 29	6418	1-1/8" x 10 / 1-5/8" x 25



3750 CLUTCH PRESSURE PLATE SPACER - SAAB

Necessary for any clutch repair on an '84 - '93 Saab 900. With 2 people, you can place ring into the pressure plate teeth while the clutch pedal is depressed, simplifying removal of the disc/pressure plate/slave.



9592 DRIVE PLATE / FLYWHEEL BOLT SOCKET - NISSAN

Low-profile E20 Torx® socket removes and installs the low-profile bolts found on Nissan QR25's with automatic transmissions. 1/2" drive.

