



A875 SERPENTINE BELT TOOL KIT

A must for removing and installing serpentine belts with spring-loaded idler pulleys. 23" long slender design provides proper reach and prevents damage. Includes 4 metric sockets (13mm, 15mm, 16mm and 18mm), plus 3/8" and 1/2" drives. Also includes 9" extension for longer reach and multiple angle work. Covers GM, Ford, Chrysler and Saturn applications.



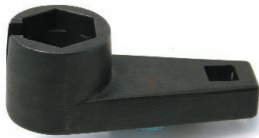
2070 7 PC. SENSOR & SENDING UNIT SOCKET SET

Full range of specialty sockets will service Oil Pressure Sending Units, Vacuum Switches and Oxygen Sensors. Heat-treated, black finish and packed in blow mold case.



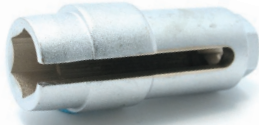
2060 COMBINATION VACUUM SWITCH/OXYGEN SENSOR SOCKET

Universal slotted socket will service all 7/8" (22mm) hex vacuum switches and oxygen sensors. Use with 1/2" square drive tools or 7/8" (22mm) wrench.



2065 OXYGEN SENSOR WRENCH

Extended crow's foot design allows access to oxygen sensors that are located in the exhaust manifolds. Full slot accommodates connectors on heated oxygen sensors. Reinforced body for extra strength. 7/8" (22mm) hex wrench with 3/8" square drive.



2066 OXYGEN SENSOR SOCKET

Thick rib built into middle of socket helps remove the most stubborn sensors. Slot design allows clearance of wire. 7/8" (22mm) hex opening with 1" hex or 1/2" square drive.



2042 OIL PRESSURE SENDING UNIT SOCKET - 1" & 1-1/16"

3" long socket installs and removes Oil Pressure Switches up to 2-5/8" long found on some older GM and Chrysler vehicles. Use with 3/8" square drive or 1" hex tools.



2043 OIL PRESSURE SENDING UNIT SOCKET - 1-1/16"

2-1/2" (63mm) long socket removes and installs sending units. Two-step models will not work where this will. Use with 3/8" square drive tools.



2340 14MM SPARK PLUG CYLINDER HEAD RETHREADER KIT

Saves the cost of a new head by repairing damaged threads on aluminum heads. Includes 5/8" hex drive slim-design tap and one each of four sizes of solid steel inserts to replace damaged threads. All parts are available separately.



No.	Description
2341	14mm Tap & Reamer
2342	14mm Inserts - 3/8" Long (Set of 2)
2343	14mm Inserts - 7/16" Long (Set of 2)
2344	14mm Inserts - 1/2" Long (Set of 2)
2345	14mm Inserts - 3/4" Long (Set of 2)

* SEE FIX-A-THRED® SECTION FOR OTHER SPARK PLUG REPAIR KITS. *

2360 10MM/14MM SPARK PLUG HOLE THREAD CHASER

Harden steel tool removes carbon and corrosion and straightens damaged threads. Works on both 10mm and 14mm threads. Use with 5/8" deep socket, open end or box wrench.

**2361 14MM/18MM SPARK PLUG HOLE THREAD CHASER**

Removes carbon and corrosion and straightens damaged threads on both 14mm and 18mm spark plug holes. Use with 13/16" deep socket, open end or box wrench. Tapered ends for easy starting.

**2105 CRANK STOPPER**

4" long x 14mm threaded bolt screws into spark plug port to lock engine in place to allow removal and installation of timing chain, timing belt or harmonic balancer pulleys. Soft brass end protects piston.

**2502 DOUBLE-D CARBURETOR ADJUSTING TOOL**

Fits adjustable screws on older domestic cars and many rebuilt carburetors. Features strong flexible cable shaft and thin handle for better accessibility. OAL: 11" (28cm)

**8990 ENGINE CHAIN HOIST**

28" (71cm) long, heavy-duty chain assembly helps lift engines and other heavy parts up to 1,000 pounds (455 kg). Manufactured from heat-treated alloy steel, center ring is 3/8" (9.5mm) O.D., links are 1/4" (6.4mm) O.D. and sling ends are 1/4" (6.4mm) thick.

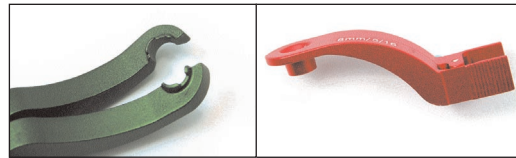


EXTERNAL ENGINE TOOLS

3475 8 PC. DELUXE OFFSET DISCONNECT TOOL KIT

For separating quick-disconnect fittings on heater, A/C, fuel and cooler lines. Unique offset design allows for access in confined or obstructed areas. Tools are color-coded anodized aluminum construction and spring-loaded for easy, one-hand operation. Includes 6 sizes in standard design, plus two special 3/8" designs – one for Jiffy-tite® fittings found on all 1996 to current GM transmission oil cooler lines and the other for most Ford vehicles and 2003 to current Cadillac CTS. Tools are packed in open-face blow mold case. Also available individually.

No.	Size	No.	Size
3480	5/16"	3484	3/4"
3481	3/8"	3485	7/8"
3482	1/2"	3486	3/8" (Special - GM)
3483	5/8"	3487	3/8" (Special - Ford/Cadillac)



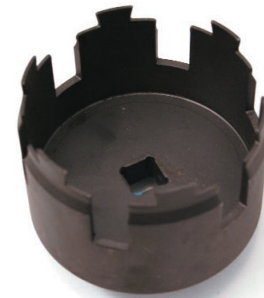
8810 HOSE REMOVER PLIERS

Remove Fuel, Vacuum or Heater Hoses from 1/4" to 3/4" (6mm to 19mm) diameter. Quickly and easily reaches into tight areas to access hose. Push pliers between part and hose end, squeeze handles to open pliers and pull away hose. Better than using hands or regular pliers. Features spring-loaded handles with vinyl grips. OAL: 9" (23cm)



2750 GM WATER PUMP SOCKET

Removes and replaces water pumps on 1993 and newer Cadillac 4.6L V8 Northstar and 1995 – 1999 Oldsmobile Aurora 4.0L V8. Tool self-centers in the water pump housing to engage pump. Use with 1/2" drive tools or breaker bar. Single piece construction for high-torque use.



38181 M18 OXYGEN SENSOR THREAD REPAIR KIT

Repairs damaged oxygen sensor threads in the exhaust manifold. Includes installation tool, tap and 5 inserts all packed in sturdy case. High-temperature Inconel inserts eliminate the need for exhaust manifold replacement. Replacement insert pack available separately.

Insert Pack No.	Thread Size	Qty
28181	M18 – 1.5	5

